

New York State Documents

OCLC:



ISSUE:
CALL No.:



TITLE: Regents high school examination.
AGENCY: University of the State of New York//
CHECKLIST: Not on checklist

Original Document Scanned at:

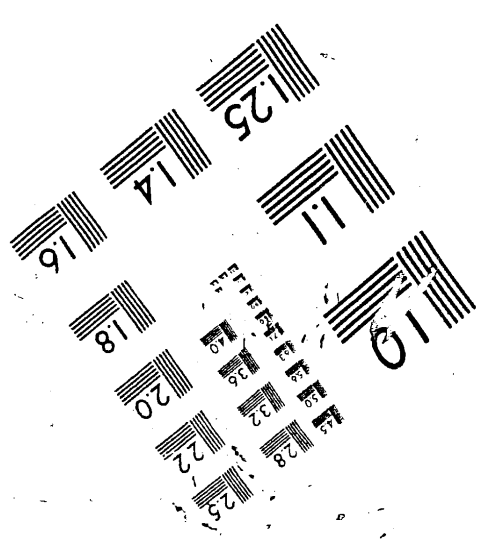
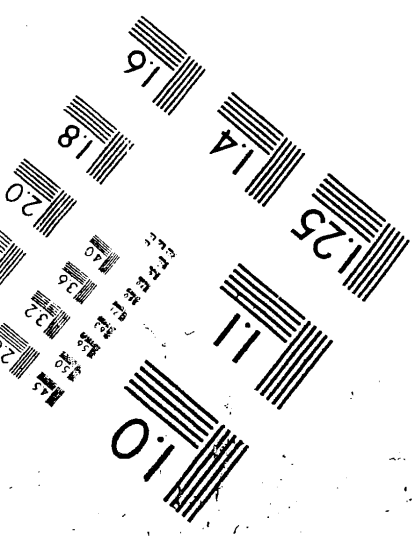
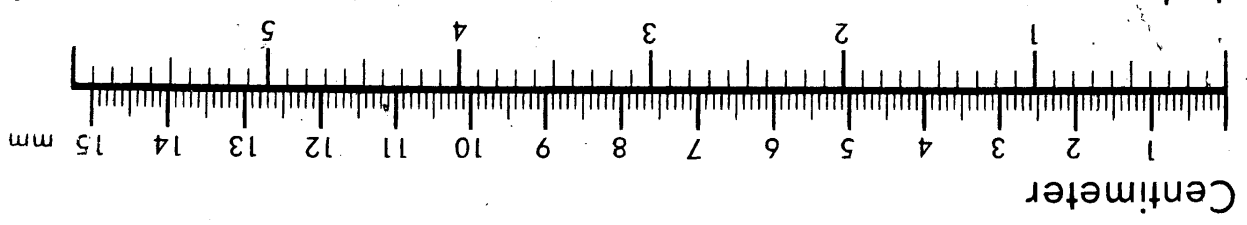
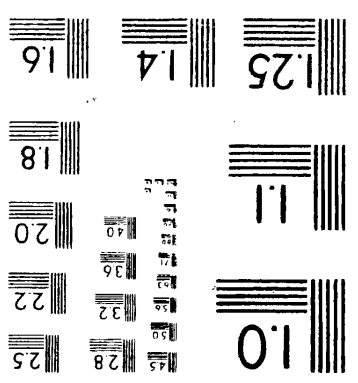
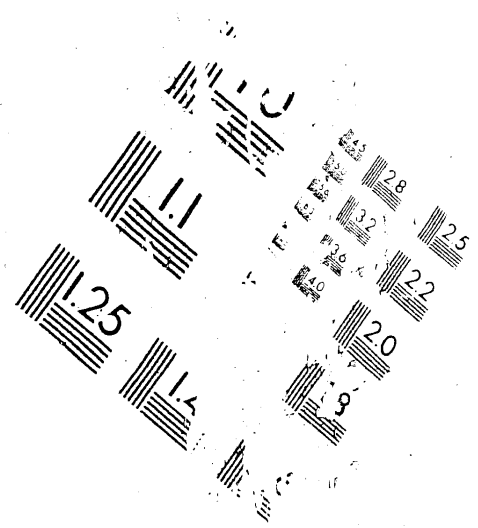
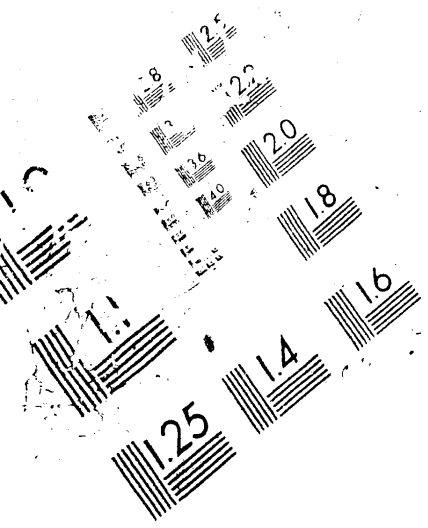
- 400 DPI Simplex
 Duplex

Original Document contained:

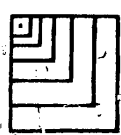
- Black & White Photos
 Colored Photos
 Colored Print (list color) _____
 Colored Paper (list color) _____
 Line Art, Graphs
 Oversized Pages -- reduced from _____ (original size)
 Text Only

Date Scanned: 4/1/02

**This electronic document has been scanned by the
New York State Library from a paper original and has been
stored on optical media.**



Association for
In-Orbiton & Image
Mat. 1980
MS303-1980



The University of the State of New York

315TH HIGH SCHOOL EXAMINATION

EARTH SCIENCE

Tuesday, June 17, 1952 — 1.15 to 4.15 p. m., only

Write at top of first page of answer paper (a) name of school where you have studied, (b) number of weeks and recitations a week in earth science. Give either the total number of laboratory periods in earth science and the length of such periods or the number of laboratory exercises performed. A paper lacking the statement of laboratory work will not be accepted at a standing of less than 75 credits.

The minimum time requirement is five periods per week for a school year, including at least one prepared laboratory period or its equivalent. [Two unprepared laboratory periods are considered the equivalent of one prepared laboratory period. At least 30 laboratory exercises are required.]

Name of pupil.....Name of school.....

Answer all questions in part I and five questions from part II. Answers to the questions in part I should be written on the question paper as directed and handed in with the other answer paper. Answers should be numbered and lettered to correspond with the questions.

Part I

Answer all questions in part I.

Write on the line at the right of each statement the number preceding the word or expression that best completes the statement. [24]

- 1 The moon's period of rotation is about one (1)day (2)week (3)month (4)year 1.....
2 The highest cloud type is known as (1)cirrus (2)cumulus (3)nimbus (4)stratus 2.....
3 When facing the star Polaris, an observer is facing (1)east (2)north (3)south (4)west 3.....
4 Seismographs are used in the study of (1)earthquakes (2)floods (3)tides (4)stars 4.....
5 A degree of longitude is longest at the (1)Arctic Circle (2)Equator (3)North Pole (4)Tropic of Cancer 5.....
6 Barometer readings are usually highest when the air is (1)cool and dry (2)cool and moist (3)warm and dry (4)warm and moist 6.....
7 Tornadoes are most frequent over the (1)Atlantic Coastal Plain (2)Great Basin (3)Great Lakes (4)Great Plains 7.....
8 Cyclones moving across New York State travel mostly from (1)east to west (2)north to south (3)south to north (4)west to east 8.....
9 The Columbia Plateau is a (1)fault plateau (2)lava plateau (3)marine plateau (4)peneplane 9.....
10 The substance that ground water dissolves most rapidly is (1)limestone (2)quartzite (3)shale (4)slate 10.....
11 Ground moraine is deposited by (1)glaciers (2)ground water (3)running water (4)wind 11.....
12 Very irregular coastlines are usually caused by (1)earthquakes (2)emergence (3)submergence (4)wave deposits 12.....
13 The winter monsoon over India blows from the (1)northeast (2)northwest (3)southeast (4)southwest 13.....

[1]

[OVER]

327

- 14 The Milky Way is a (1) constellation (2) galaxy (3) solar system (4) star 14.....
- 15 The distance in light years from the earth to Proxima Centauri is about (1) 4000 (2) 400 (3) 40 (4) 4 15.....
- 16 A mineral that is little affected by chemical weathering is (1) calcite (2) feldspar (3) hornblende (4) quartz 16.....
- 17 Rivers flowing in steep-sided valleys are (1) drowned (2) mature (3) old (4) young 17.....
- 18 A planet that goes through phases is (1) Jupiter (2) Mars (3) Saturn (4) Venus 18.....
- 19 An exposed volcanic neck is a feature of a volcano in (1) infancy (2) maturity (3) old age (4) youth 19.....
- 20 A fiord is (1) a bay (2) a glacier (3) an island (4) a volcano 20.....
- 21 When the air temperature reaches the dew point, the relative humidity in per cent is (1) 0 (2) 50 (3) 100 (4) unknown 21.....
- 22 The standard time meridian in New York State is (1) 75° E (2) 75° N (3) 75° S (4) 75° W 22.....
- 23 Clouds with flat bases and fluffy tops are (1) cirrus (2) cumulus (3) nimbus (4) stratus 23.....
- 24 A source of iron is (1) bauxite (2) galena (3) hematite (4) sphalerite 24.....

Write on the line at the right of *each* statement the word or expression that, when inserted in the blank, will make the statement true. [14]

- 25 An isobar joins places having the same 25.....
- 26 Hail forms in ... clouds. 26.....
- 27 The percentage of oxygen in the troposphere is about 27.....
- 28 Carbonic acid is formed when carbon dioxide dissolves in 28.....
- 29 Hills of loose, windblown sand are called 29.....
- 30 A wind gap is an abandoned 30.....
- 31 One type of glacial plain is a (an) ... plain. 31.....
- 32 The circumference of the earth is about ... miles. 32.....
- 33 The name of the largest planet is 33.....
- 34 The most common element in the rocks of the earth's crust is 34.....
- 35 Explosive volcanic eruptions produce cones made of 35.....
- 36 Igneous intrusions between sedimentary rock layers are called 36.....
- 37 Upward folds in rock layers are called 37.....
- 38 The Sahara Desert is in the ... wind belt. 38.....

In some of the following statements the italicized term makes the statement incorrect. For each *incorrect* statement write on the line at the right the term that must be substituted for the italicized term to make the statement correct. For each *correct* statement, write the word *true* on the line at the right. [12]

- 39 Standard air pressure at sea level is about *twenty* inches of mercury. 39.....
- 40 There are high tides approximately every *twelve and one-half* hours. 40.....
- 41 One degree of latitude is about *one hundred* statute miles long. 41.....
- 42 The equatorial low-pressure belt is the *horse-latitude* belt. 42.....

- 43 The Finger Lakes of New York State were formed by *glacial* action. 43.....
- 44 Earthquakes are most frequent in *mature* mountains. 44.....
- 45 A cut-off meander may result in the formation of a (an) *oxbow lake*. 45.....
- 46 Rock fragments accumulated at the base of a cliff are known as *talus*. 46.....
- 47 The color of the coolest stars is *white*. 47.....
- 48 A sand bar attached to the mainland at one end is called a (an) *spit*. 48.....
- 49 Rising air cools chiefly by *mixing*. 49.....
- 50 When condensation occurs on a surface whose temperature is below 32° F., *sleet* forms. 50.....

Part II

Answer five questions from part II.

1 Fill in the information needed to complete the following table: [10]

	DATE	LOCATION OR LATITUDE OF SUN'S VERTICAL RAY	HOURS OF DAYLIGHT AT EQUATOR	HOURS OF DAYLIGHT IN NEW YORK STATE
Summer Solstice	_____	_____	_____	_____
Spring Equinox	_____	_____	_____	_____
Fall Equinox	_____	_____	_____	_____
Winter Solstice	_____	_____	_____	_____

- 2 a Name *three* types of mountains. [3]
- b Make diagrams showing the rock structure of *each* of these three types of mountains. [3]
- c What type of mountain does *each* of the following represent: (1) Sierra Nevada Mountains of California, (2) Black Hills of South Dakota? [2]
- d Compare a young plateau and a mature plateau as to (1) rock structure and (2) relief. [2]

- 3 a Name *three* classes of rocks and give *one* example of a rock in each class. [3, 3]
- b Explain how *each* of these three classes of rock is formed. [3]
- c State *one* difference between a rock and a mineral. [1]

- 4 a State *two* reasons why slanting rays of the sun have less heating effect than vertical rays. [2]
- b How do land and water surfaces differ in their ability to absorb solar energy? [1]
- c How does an increase in altitude generally affect (1) air temperature, (2) air pressure, (3) wind velocity, (4) absolute humidity? [1, 1, 1, 1]
- d Why do continents have colder winters than oceans at the same latitude? [1]
- e Why are cloudy nights usually warmer than clear nights? [2]

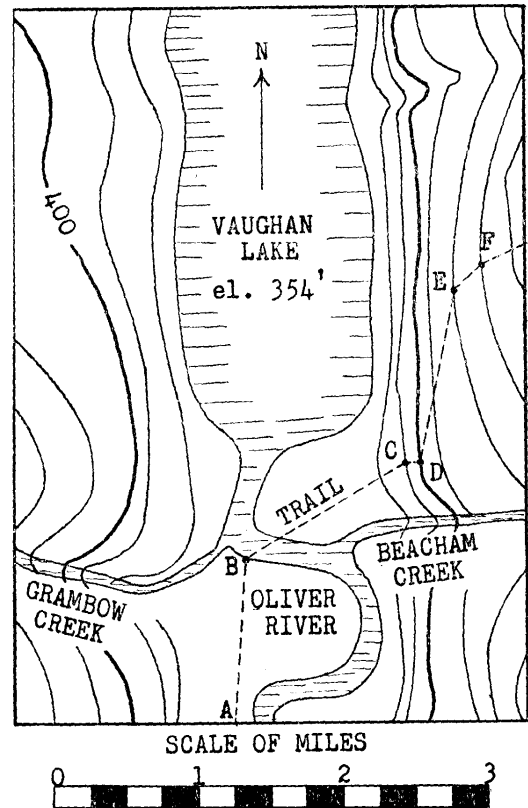
- 5 a Name *four* factors that determine the climate of a place. [4]
- b Explain how each of *two* of the above factors makes the climate of New Orleans different from that of Denver. [2, 2]
- c Using symbols or words, name the air masses that would probably bring to New York State the following kinds of *winter* weather: (1) cold and dry, (2) warm and moist. [2]

[3]

[OVER]

6 The following questions relate to the accompanying map :

- a What is the contour interval used? [1]
- b What is the straight-line distance from point B to point E measured to the nearest quarter of a mile? [1]
- c What letters represent the steepest part of the trail? [1]
- d What letters represent the most level part of the trail? [1]
- e Why is the course of Beacham Creek straight? [1]
- f Why is the course of Oliver River winding? [1]
- g How will any stream flowing into Vaughan Lake make the lake smaller? [1]
- h What is the elevation at point E? [1]
- i What is the direction of flow of Beacham Creek? [1]
- j On the map there is a valley in which the stream is not shown. Draw a line on the map showing the location of this stream. [1]



- 7 a What is the water table? [1]
 - b Name *two* factors that determine how close the water table is to the earth's surface. [2]
 - c What relation is there between a hillside spring and the water table? [1]
 - d How does an ordinary or farmer's well differ from a spring? [1]
 - e Name *two* conditions necessary for the formation of an artesian well. [2]
 - f What makes the water of geysers hot? [1]
 - g Name *two* regions where geysers occur. [2]
- 8 Distinguish between the terms in each of *five* of the following pairs: [10]
- | | |
|---------------------------------|------------------------------|
| a latitude — longitude | d cold front — warm front |
| b solar eclipse — lunar eclipse | e spring tide — neap tide |
| c barograph — thermograph | f dew point — freezing point |

FOR TEACHERS ONLY

ESc

INSTRUCTIONS FOR RATING

EARTH SCIENCE

Tuesday, June 17, 1952 — 1.15 to 4.15 p. m., only

Use only *red* ink or pencil in rating Regents papers. Do not attempt to *correct* the pupil's work by making insertions or changes of any kind.

Part I

Allow a total of 50 credits, one credit for each correct answer. For questions 25 through 50, variations will be accepted if the answer is scientifically correct. However, in questions 40, 43, 45, 46 and 48, for which *true* is the correct answer, no variations will be allowed.

(1)	3	26	cumulonimbus
(2)	1	27	20%-22%
(3)	2	28	(ground) water
(4)	1	29	dunes
(5)	2	30	water gap
(6)	1	31	outwash
(7)	4	32	24,000-25,000
(8)	4	33	Jupiter
(9)	2	34	oxygen
(10)	1	35	ash
(11)	1	36	sills
(12)	3	37	anticlines
(13)	1	38	trade
(14)	2	39	30
(15)	4	40	true
(16)	4	41	69-70
(17)	4	42	doldrum
(18)	4	43	true
(19)	3	44	young
(20)	1	45	true
(21)	3	46	true
(22)	4	47	red
(23)	2	48	true
(24)	3	49	expansion
(25)	(atmospheric) pressure	50	frost